

# FLOW-TRONIC

FLOW MEASUREMENT SOLUTIONS



FOR WATER AND WASTEWATER

Sewer and storm water  
collection pipes monitoring.  
Inflow and Infiltration  
quantification

Wastewater treatment  
plants & Combined  
Sewer Overflow

Rivers, Channels  
& Irrigation

Water treatment  
Plant & Water  
distribution, NRW

Industry &  
hydropower



# YOUR FLOW MEASUREMENT SOLUTIONS FOR WATER AND WASTEWATER

## RAVEN-EYE 2+



- Measurement of surface velocity using radar Doppler technology and level measurement using radar or ultrasonic technology
- Data analysis via Flow-Tronic software and open communication protocol for easy data transfer
- Suitable for use in partially filled pipes/open channels
- Available for ATEX Zone 1
- ▶ **Maintenance-free technology thanks to contactless measurement solutions and IP68 protection rating**



## BELUGA – BELUGA A/V



- Ultrasonic area/velocity flow meter
- Bidirectional sensor suitable for use in partially filled pipes and open channels
- Integrated and replaceable pressure transducer for level measurement (A/V version)
- Flow rate calculation within the sensor (A/V version)
- Flexible and robust mounting brackets to suit all site configurations
- ▶ **Ideal for Inflow & Infiltration flow studies**



## PELICAN



- Magnetic-inductive measuring unit for determining flow velocity
- Portable measuring unit to perform on-site verifications, calibrations and flow profiling
- Handheld unit with display for rapid acquisition and evaluation of measurement data
- Use in rivers, irrigation canals, water channels and sewer pipes
- ▶ **User-friendly and flexible measuring unit for portable use**



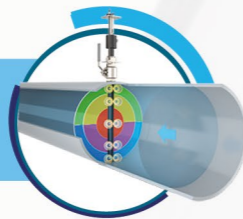
## PHOENIX 2



- Non-contact radar Doppler sensor for large channels and rivers
- Integrated auto-diagnostic function (monitoring of internal pressure, temperature and humidity)
- Wide radar beam to provide accurate and representative average velocity data
- Detects bidirectional flow and can be installed high above the water surface
- ▶ **Maintenance-free, IP68 enclosure with radar technology for highly accurate flow measurements**



## TORPEE-MAG



- Full insertion flow meter with electromagnetic multi-point electrode measurement
- Bi-directional sensor, can be installed in non-ideal pipe setting while providing high accuracy and repeatability
- Robust flowmeter for all applications from production to distribution. Ideal flow monitoring solution for District Metered Areas.
- Mounting on 1", 1.5", or 2" pipe threads with a control unit; optionally with a battery-powered converter
- ▶ **Easy installation of a high-precision measuring unit, even for bidirectional water flows**



### Data Loggers

- IFQ Monitor 1.5
- IFQ Monitor 2
- IFQ Logger 2
- RTQ-IoT
- TMC-20
- TMC-15
- TMC-15 IP68



## YOUR OPERATIONAL BENEFITS

- Precise and reliable flow measurement thanks to patented waveguide radar technology
- Maintenance-free velocity measurement thanks to non-contact radar Doppler technology
- Accurate measurement data through patented hybrid technology using RAVEN-EYE & BELUGA in all flow conditions
- Open data communication protocol for seamless connection to data logger SCADA systems via digital Modbus RS-485 RTU/ASCII technology or analog via 4-20 mA
- High flexibility in calibration and adaptation to different operating conditions through Fuzion software and data transmission capabilities

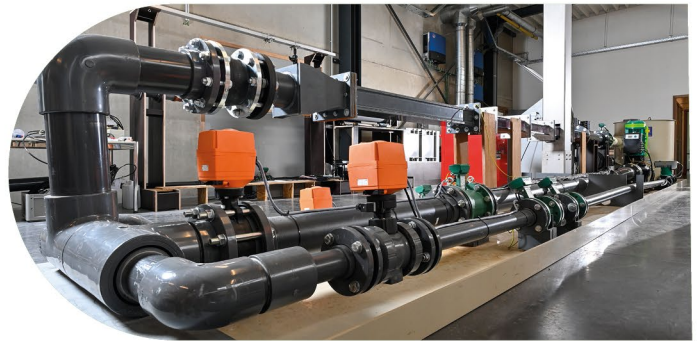
# BECAUSE PRECISION MATTERS



- Since 1989 focused on flow measurement for water and wastewater
- Technology-driven with a strong focus on innovation
- Patents for radar beam and hybrid solutions
- ATEX certification and calibration test benches at the FLOW-TRONIC site in Belgium
- Production, assembly, and service/maintenance at the FLOW-TRONIC site in Belgium
- Global distribution through partners and subsidiaries in the U.S. and Germany
- Worldwide references for various applications

## PORTOFOLIO

- Stationary and portable flow measurement devices
- Technologies: Radar-Doppler, Ultrasonic-Doppler, Electromagnetic, Pressure transducers, Acoustic sensors
- Calculation software integrated with open SCADA protocols via analog 4-20 mA or digital via Modbus RS-485 RTU/ASCII
- Optional controller with monitor and touchscreen for connection to SCADA systems
- Consulting on optimal placement and configuration of measuring points
- Data management and data transfer



## YOUR CONTACTS FOR GLOBAL CUSTOMER SERVICE



**Boris Sévar**



- CEO
- +32 (0)87 / 89 97 99
- b.sevar@flow-tronic.com



**Clément Dethier**



- Area Sales Manager
- +32 (0)87 / 89 97 82
- c.dethier@flow-tronic.com



**Laurent Loeckx**



- Area Sales Manager
- +32 (0)87 / 89 97 89
- l.loeckx@flow-tronic.com



**Hans-Joachim Rauch**



- DACH Sales Manager
- +49 170 1950 548
- hj.rauch@flow-tronic.com



**Vincent Favre**



- North American Manager
- +1 548 888 6432
- v.favre@flow-tronic.com

### FLOW-TRONIC BELGIUM

Chemin des Tilleuls 32  
4840 Welkenraedt Belgium

Phone : +32 (0)87 / 89 97 99  
e-mail : sales@flow-tronic.com

### FLOW-TRONIC GERMANY

Otto-Hahn-Strasse 48  
89548 Ehingen (Donau)

Phone : +49 170 1950 548  
e-mail : vertrieb@flow-tronic.com

### FLOW-TRONIC NORTH AMERICA

990 Biscayne Boulevard, Office 701  
Miami, FL 33132 US

Phone : +1 548 888 6432  
e-mail : sales@flow-tronic.com